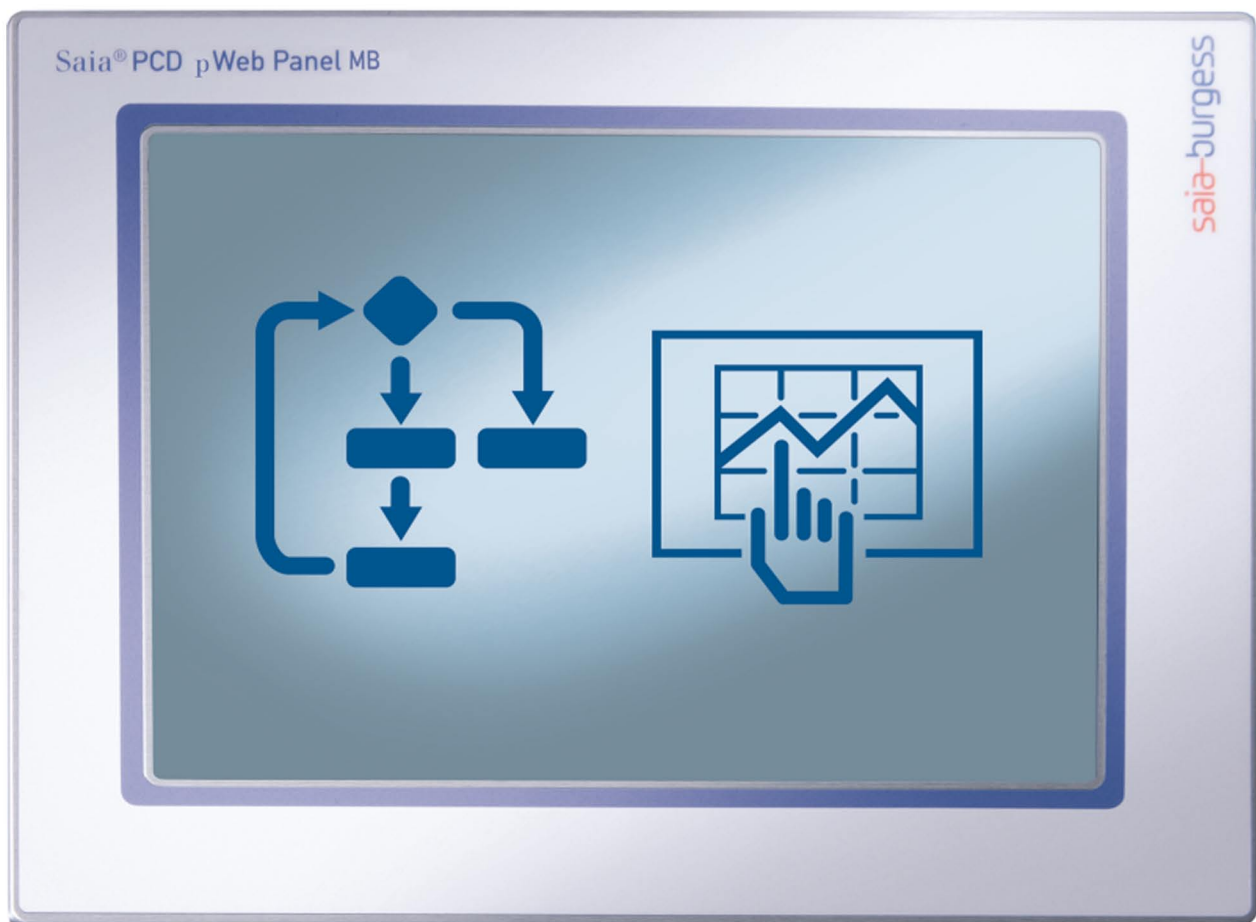


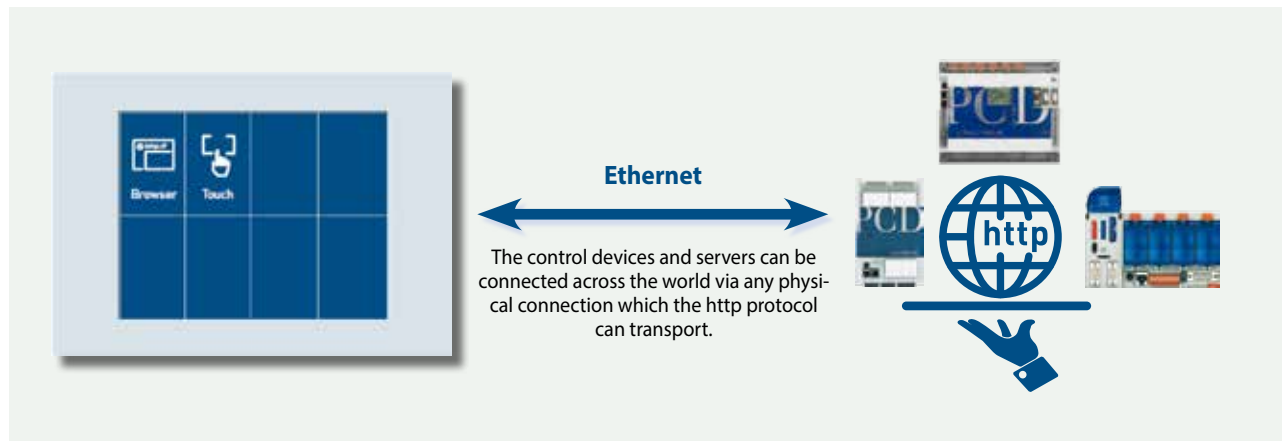
Saia® PCD7D system Web Panel MB med PLC&HMI.



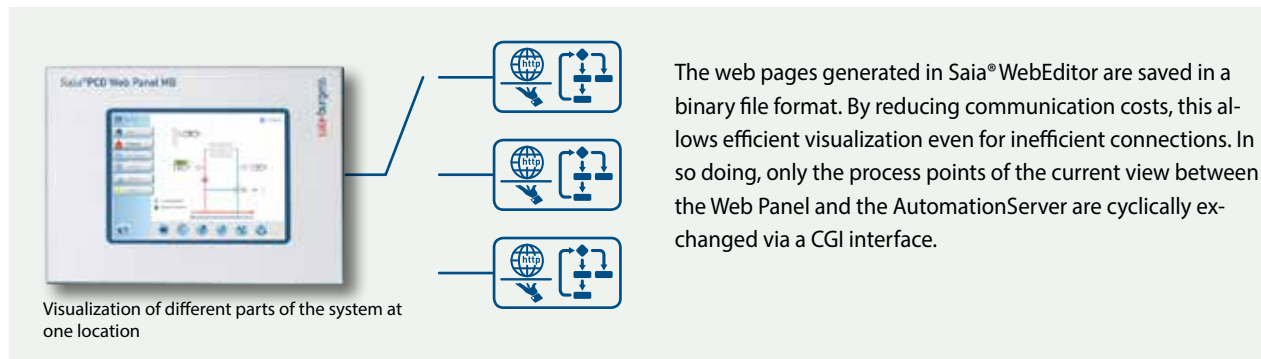
2.2 Saia® Web Panel MB | Web technology

Combination of openness, world standards and universality

A system for operation/monitoring with web technology consists of essentially just two functional elements: a web server and a browser. The protocol linking them is http. These two functional elements can be combined in the same automation device or can be located on opposite sides of the globe.



The operation/monitoring project is created once using Saia® WebEditor and saved to the associated web server. Every browser can freely access any web server of the automation devices recognized in the network and run its Web-HMI application. A web server can handle multiple browsers at the same time. Web-HMI eliminates complex engineering, duplication of project expenses, software licensing problems and system breaks during operation/monitoring.



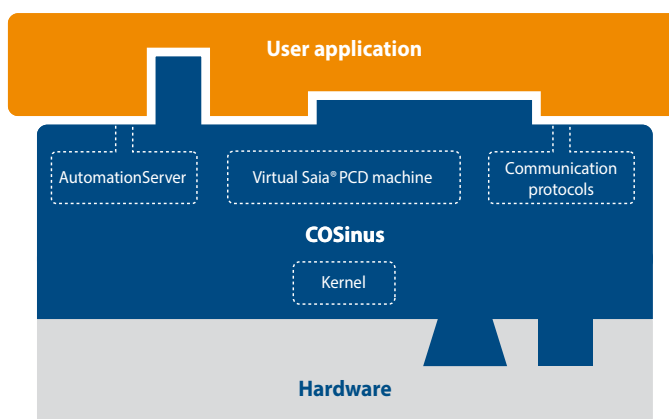
Saia® COSinus



Systems are often extended or fitted with new functions and must be maintained throughout their entire lifecycle. The Saia® COSinus operating system was specially developed from scratch in-house for use in automation environments. It is therefore possible to ensure the industrial

lifecycle without being pushed by large market-influencing companies. The top priority for Saia® COSinus is reliable and continuous operation.

The Saia® Micro-Browser Panel series are essentially based precisely on this reliable system which has been expanded with the Micro-Browser application. This allows the visualization and operation of web projects which have been created with Saia® WebEditor. Here, the visualization project can be saved locally or on a remote server.



1 Automation stations

2 HMI Visualization and operating

3 Dedicated room controller

4 Consumption data acquisition

5 Cabinet components

2.4 Saia® pWeb-Panel MB

In addition to the functions of the standard MB panel, a programmable logic controller is integrated into the pWeb-Panels. Based on the COSinus operating system of the Saia® PCD, specific, complex control logic and local data processing logic can be implemented in one device. The priority here is the operating and visualization functions so that small control systems can also be implemented. The control functions have a lower priority.



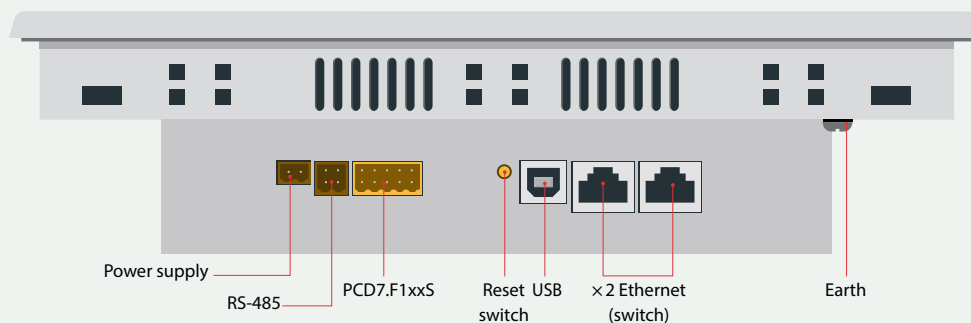
Webcode
scen13088

Main characteristics

- ▶ 2x Ethernet interfaces (switch)
- ▶ RS-485 interface
- ▶ 240 MHz processing power
- ▶ Expandable via PCD7.F1xxS modules
- ▶ Usable as RIO master



Installation

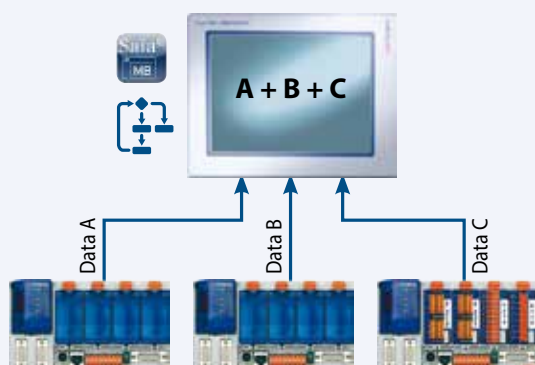


The high priority given to visualization in the program workflow offers the best basis displaying data from various devices. In addition, simple control tasks can be implemented directly in the panel. A Saia® PCD is recommended for controls and time-critical controllers.

Application examples

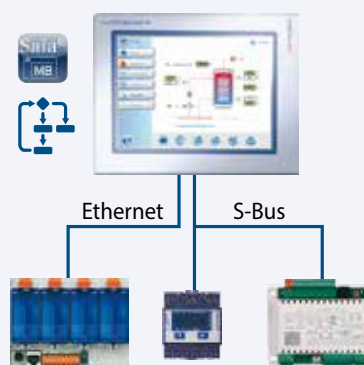
Data concentrator

The logic enables the values and statuses of a large number of connected Saia® PCD automation stations to be collected, linked and then visualized at a higher level.



Decentralized automation

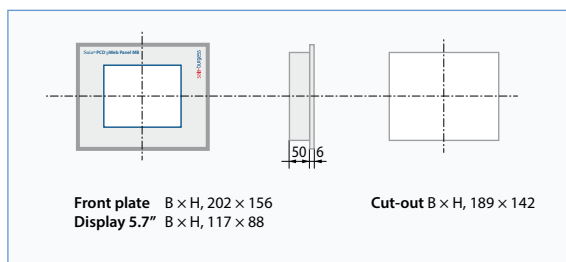
The programmable Web-Panels enable the construction of decentralized automation systems with low space requirements.



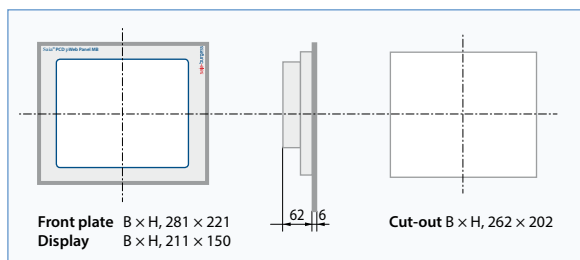


Dimensions (W × H × D) and cut-out (B × H) mm

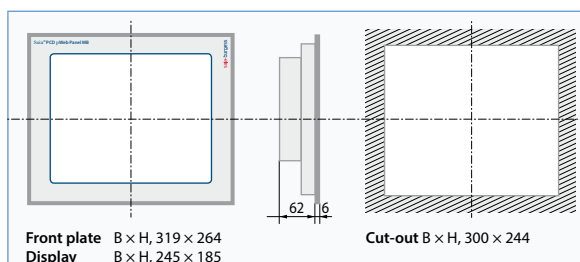
PCD7.D457VT5F



PCD7.D410VT5F



PCD7.D412DT5F



Logic controller

Operating system:	Saia® COSinus with Micro-Browser extensions
Protection class	IP65
User program, ROM/DB/Text	1 MByte
RAM/DB/Text	1 MByte
Media	16,384 flags / 16,384 registers
Backup for users	The user program is saved on the integrated microSD card
File system for users	128 MByte onboard
Program cycle time	10 cycles/sec. maximum
Protocols at field level	Serial-S-Bus, Ether-S-Bus, Ether-S-IO, Modbus RTU or TCP
Internet services	Saia® Micro-Browser, AutomationServer

Interfaces

Ethernet	2× RJ-45 (Switch)
USB	1 × (1.1 / 2.0)
Serial interfaces	RS-485 1 slot for PCD7.F1xxS
Temperature range	Operation: 0 ... 50°C (typically) Storage: -20 ... 70°C
Humidity	Operation: 10 ... 80%, Storage: 10 ... 98%, non-condensing
Processor	Coldfire CF5373L 240Mhz
Battery	Lithium Renata CR 2032 (lifetime of 1...3 years)
Real-time clock (RTC)	through battery backup

Technical data

	PCD7.D457VT5F	PCD7.D410VT5F	PCD7.D412DT5F
Display size	5.7" TFT	10.4" TFT	12.1" TFT
Resolution (pixels)	VGA 640×480	VGA 640×480	SVGA 800×600
Touch screen	Resistive touch screen	Resistive touch screen	Resistive touch screen
Contrast adjustment	Yes	Yes	Yes
Background lighting	LED	LED	LED
Power supply	24 VDC ±20 %	24 VDC ±20 %	24 VDC ±20 %
Current draw	max. 500 mA	max. 500 mA	max. 600 mA
Status front LED	---	---	Yes

Communication

The Saia® pWeb Panel MB units can be expanded with one slot for PCD7.Fxxx modules or PCD7.Rxxx modules with various communication and memory modules.

The modules are described in the section "1.4 Saia® PCD1 series".

2.6 Accessories for Micro-Browser Panels

The right mounting kit for all Web-HMI devices

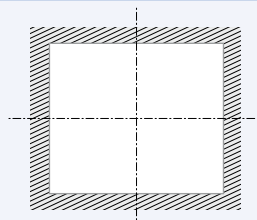
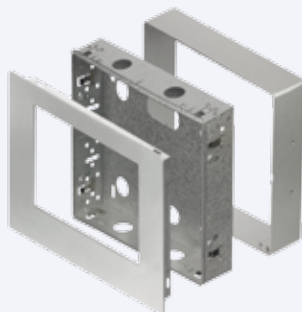
The Micro-Browser Panel series not only fits in a switch cabinet but, using industrial in-wall and off-wall mounting kits, enables this modern technology to be easily and properly integrated into the area in close proximity to the user as well. The mounting kits therefore enable simple wall mounting, which is consistently available for all panels. This minimizes logistic and mounting costs.

5.7 inch

In-wall mounting PCD7.D457-IWS2*)



On-wall mounting PCD7.D457-OWS2*)



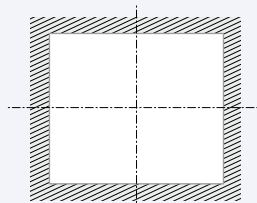
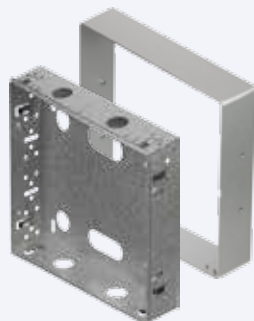
Cut-out B × H, 270 × 211
 Minimum depth
 For solid walls 75 mm
 For cavity walls 65 mm

10.4 inch

In-wall mounting PCD7.D410-IWS



On-wall mounting PCD7.D410-OWS



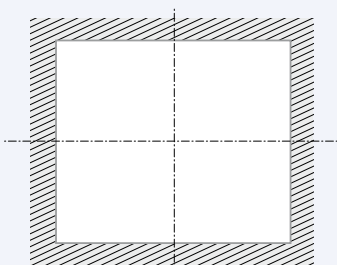
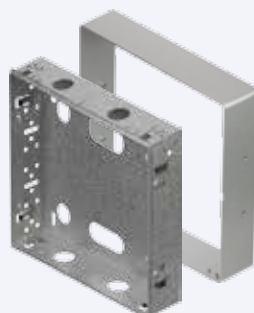
Cut-out B × H, 270 × 211
 Minimum depth
 For solid walls 75 mm
 For cavity walls 65 mm

12.2 inch

In-wall mounting PCD7.D412-IWS



On-wall mounting PCD7.D412-OWS



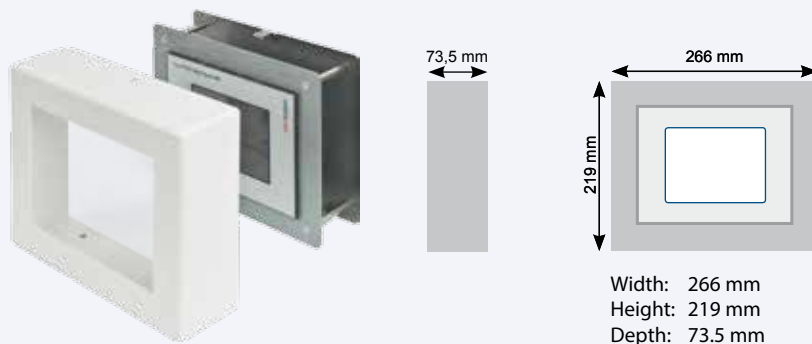
Cut-out B × H, 309 × 245
 Minimum depth
 For solid walls 75 mm
 For cavity walls 65 mm

*)In preparation, see chapter C2 «Product status»

On-wall mounting kit 5.7 inch

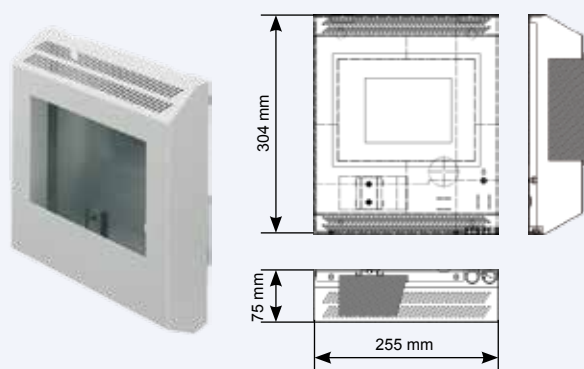
On-wall mounting

PCD7.D457-OWS



Wall mounting kit 5.7 inch

PCD7.D457-OWS1



Energy Manager wall mounting set 5.7 inch

Q.OWS-7DET7F-1



The Energy Manager package includes

- ▶ Wall mounting kit 5.7 inch PCD7.D457-OWS1
- ▶ S-Energy Manager 5.7 inch PCD7.D457ET7F
- ▶ Power pack 24 VDC Q.PS-AD2-2402F

OEM or proprietary design

The standard 5.7 inch Micro-Browser Panel without a front panel offers room for individual creativity. Whether it's for modern rooms or rustic spaces with customer-specific front screens designed in aluminum, black or wood, this modern technology can be easily and unobtrusively integrated into a sophisticated space.



- Panel with aluminum front: PCD7.D457VTCZ33
 Panel with black front: PCD7.D457VTCZ35
 Panel with mirror-effect front: PCD7.D457VTCZ36
 Panel with neutral film: PCD7.D457VTCZ11



Video
 In-wall mounting
 Webcode scen13093a



Video
 On-wall mounting
 Webcode scen13093b

