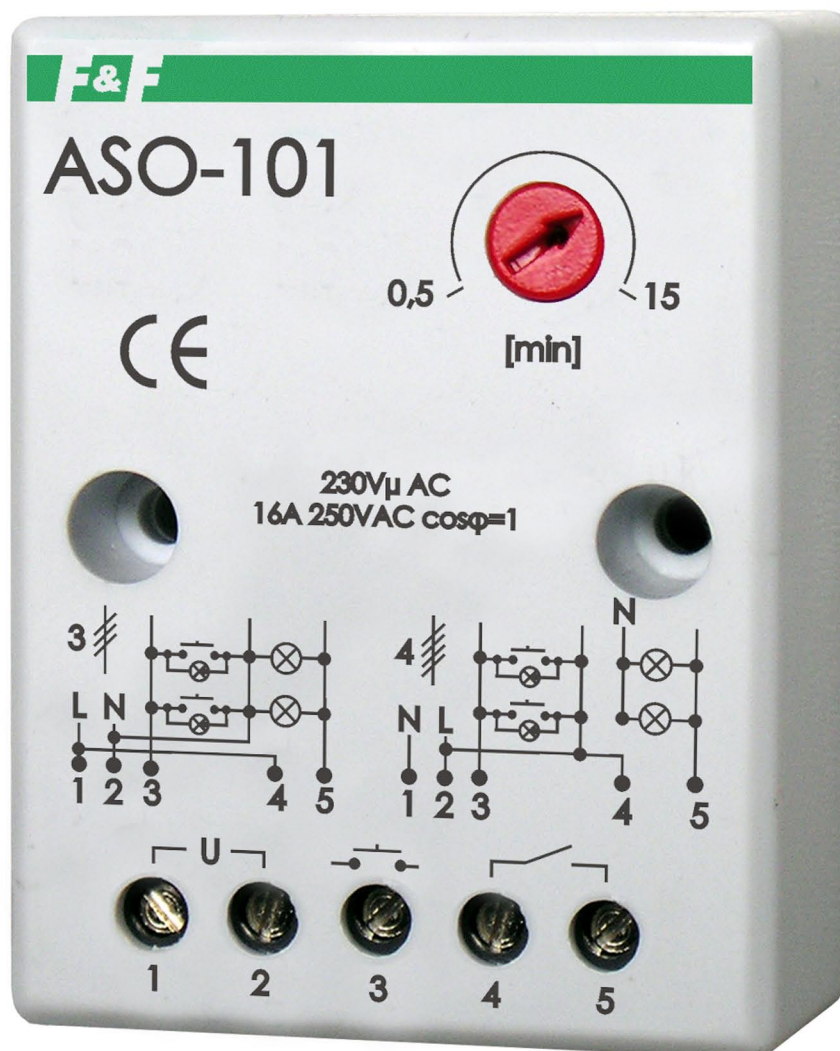




Trappautomat



 **Malthe Winje**

08-594 118 30 www.mwa.se info@mwa.se

2. STAIRCASE TIMERS

PURPOSE

Staircase timer serves to keep switched-ON lighting of staircase, corridor, or any other object for the set time and to switch-OFF this lighting automatically, upon elapse of this set time.

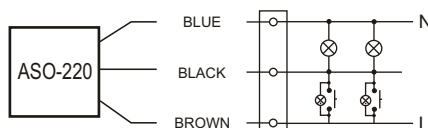
FUNCTIONING

Turned ON staircase timer supports the lighting during set time by potentiometer (from 0,5min. to 10min.). After passage of set time timer will switch OFF the lighting automatically. After switching OFF the lighting there is possibility to switch it ON again.

STANDART TYPE

ASO-220 / ASO-24

10A. With cable connection.

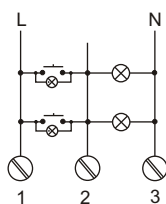


supply ASO-220	230V AC
ASO-24	24V AC/DC
current load	<10A
switching OFF delay (to set)	0,5÷10m
switching ON delay	<1sec
power consumption	0,56W
connection	cable 3×0,75mm ² ; l=0,45m
working temperature	-25÷50°C
dimensions	50×67×26mm
fixing	two screws to substrate

ASO-220 is adapted to co-operate with pushbuttons equipped with neon lamp.

ASO-201 / ASO-204

16A. With screw terminals.

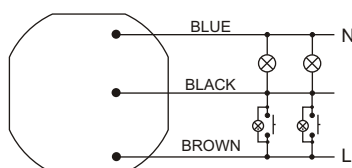


supply ASO-201	230V AC
ASO-204	24V AC/DC
current load	<16A
switching OFF delay (to set)	0,5÷10m
switching ON delay	<1sec
power consumption	0,56W
connection	screw terminals 2,5mm ²
working temperature	-25÷50°C
dimensions	50×67×26mm
fixing	two screws to substrate

ASO-201 is adapted to co-operate with pushbuttons equipped with neon lamp.

ASO-205

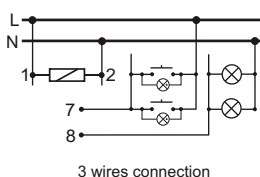
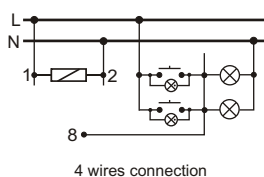
10A. To under plaster box.



supply	230V AC
current load	<10A
switching OFF delay (to set)	0,5÷10m
switching ON delay	<1sec
power consumption	0,4W
connection	wires 3×1mm ² ; l=10cm
working temperature	-25÷50°C
dimensions	Ø55, h=13mm
fixing	to under plaster box Ø60

ASO-205 is adapted to co-operate with pushbuttons equipped with neon lamp.

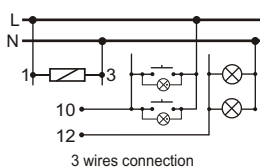
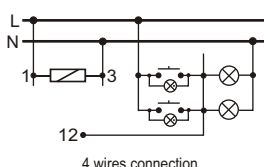
AS-B220 / AS-B24



supply AS-B 220	230V AC
AS-B24	24V AC/DC
current load	<16A
switching OFF delay (to set)	0,5+10m
switching ON delay	<1sec
power consumption	1,2W
connection	screw terminals 2,5mm ²
working temperature	-25+50°C
dimensions	2 modules (35mm)
fixing	on rail TH-35

AS-B 220 is adapted to co-operate with pushbuttons equipped with neon lamp.

AS-212 / AS-214



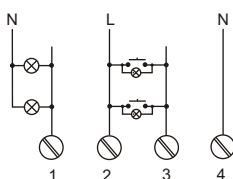
supply AS-212	230V AC
AS-214	24V AC/DC
current load	<16A
switching OFF delay (to set)	0,5+10m
switching ON delay	<1sec
power consumption	0,56W
connection	screw terminals 2,5mm ²
working temperature	-25+50°C
dimensions	1 module (18mm)
fixing	on rail TH-35

AS-212 is adapted to co-operate with pushbuttons equipped with neon lamp.

WITH ADDITIONAL FUNCTION OF COUNTER-BLOCKADE

Function of counter blockade does not allow to keep the light-ON in case of staircase switch blocking (after blocking the pushbutton, for example by match, the timer will count the set time and switch OFF the lighting). Next switching ON can be after removing the blockade.

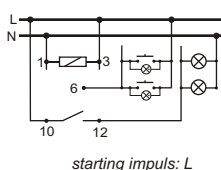
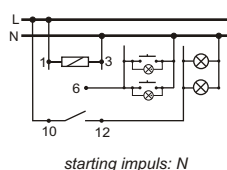
ASO-202 / ASO-203



supply ASO-202	230V AC
ASO-203	24V AC/DC
current load	<16A
switching OFF delay (to set)	0,5+10m
switching ON delay	<1sec
power consumption	0,56W
connection	screw terminals 2,5mm ²
working temperature	-25+50°C
dimensions	50×67×26mm
fixing	two screws to substrate

ASO-202 is adapted to co-operate with pushbuttons equipped with neon lamp.

AS-223 / AS-224



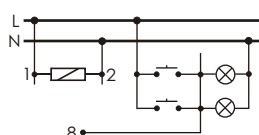
supply AS-223	230V AC
AS-224	24V AC/DC
current load	<16A
switching OFF delay (to set)	0,5+10m
switching ON delay	<1sec
power consumption	0,56W
connection	screw terminals 2,5mm ²
working temperature	-25+50°C
dimensions	1 module (18mm)
fixing	on rail TH-35

AS-223 is adapted to co-operate with pushbuttons equipped with neon lamp.

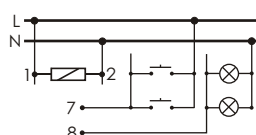
WITH FUNCTION OF SIGNALISATION OF LIGHTING SWITCHING-OFF.

AS-221T

Turned ON staircase timer supports the lighting during set time by potentiometr (from 0,5min. to 10min.) and upon elapse of this set time a reduction by half of lighting brightness follows for about 30 seconds, after that OFF follows (thus an occurrence of a sudden darkness is avoided, enabling safe approach to the switch). After switching OFF the lighting there is possibility to switch it ON again.



4 wires connection



3 wires connection

supply	230V AC
current load	<10A
switching OFF delay (to set)	0,5÷10m
switching ON delay	<1sec
time of reduced brightness	~30sec
power consumption	0,8W
connection	screw terminals 2,5mm ²
working temperature	-25÷50°C
dimensions	2 modules (35mm)
fixing	on rail TH-35

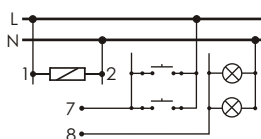
ATTENTION!

The AS-221T is not compatible with glow-discharge tubes, compact fluorescent lamps and other lighting devices including electric starters.

AS-222T

WITH COUNTER BLOCKADE

Turned ON staircase timer supports the lighting during set time by potentiometer (from 0,5min. to 10min.) and upon elapse of this set time a reduction by half of lighting brightness follows for about 30 seconds, after that OFF follows (thus an occurrence of a sudden darkness is avoided, enabling safe approach to the switch). Function of counter blockade does not allow to keep the light-ON in case of staircase switch blocking (after blocking the pushbutton, for example by match, the timer will count the set time and switch OFF the lighting). Next switching ON can be after removing the blockade.



supply	230V AC
current load	<10A
switching OFF delay (to set)	0,5÷10m
switching ON delay	<1sec
time of reduced brightness	~30sec
power consumption	0,8W
connection	screw terminals 2,5mm ²
working temperature	-25÷50°C
dimensions	2 modules (35mm)
fixing	on rail TH-35

ATTENTION!

The AS-222T is not compatible with glow-discharge tubes, compact fluorescent lamps and other lighting devices including electric starters.

ATTENTION!

Automatic staircase switches for other voltages than specified in the technical data table are also available on special request (12V, 48V, and 110V AC/DC and other). The offer does not include the AS-221T and AS-222T models.